

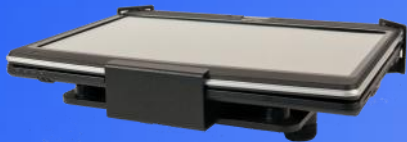
## Display Compatibility



MSP 12"



MSP 17" & 20"



Tablet PC  
Display

For more compatible  
monitors see our website.

# Master Series Hoods

Medium & Large  
Wide Angle  
Guide

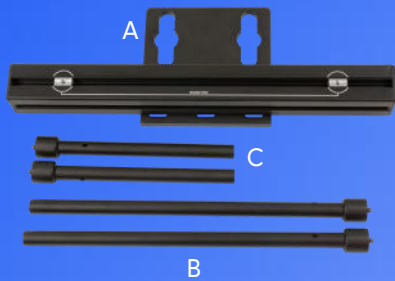


# Components



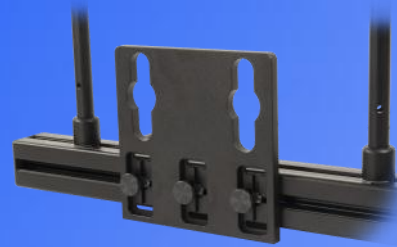
A	Glass Frame Retainer
B	Hood
C	Bracket Set

# Bracket Set Assembly



A	Drop Plate
B	Hood Poles
C	Monitor Poles

1. Screw the monitor and hood poles into the slide nuts on the bracket set. The bracket has markings to indicate the correct pole positions.



2. Ensure the drop plate is in the appropriate position on the bracket.



# Hood Assembly



1. Mount the hood onto the hood poles, secure in place at the desired height by tightening the clamps. (A)

2. Release the glass frame retainer using the knob on top.



3. Pull the catch forwards and lift it up to release the glass frame. Lower the glass frame.

4. Insert the glass in the frame. Ensuring the blue dot is facing down.



5. Holding the frame to avoid fingerprints on the glass, push the frame up into the closed position.

6. Position the catch over the frame and fasten by pushing the assembly back into position and secure using the knob.

