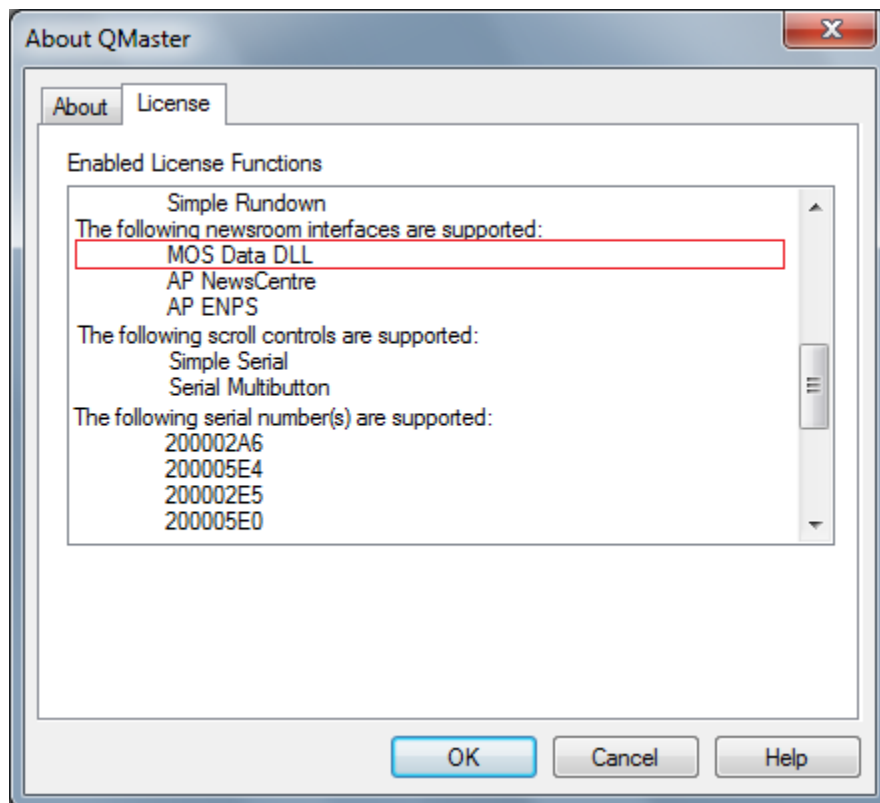


MOS CONFIGURATION GUIDE FOR QMASTER

1. Prerequisite: Install QMaster and QBox. The QMaster and QBox installation guide is here:

<http://support.autocue.com/public/Documents/QMaster 1.3/QMaster-QBox Install Guide.pdf>

2. Confirm that you have been licensed for the MOS interface. In QMaster, go to Help->About and then click on the License tab.



If you don't have the **MOS Data DLL** option, contact Autocue sales.

3. A note about MOS IDs

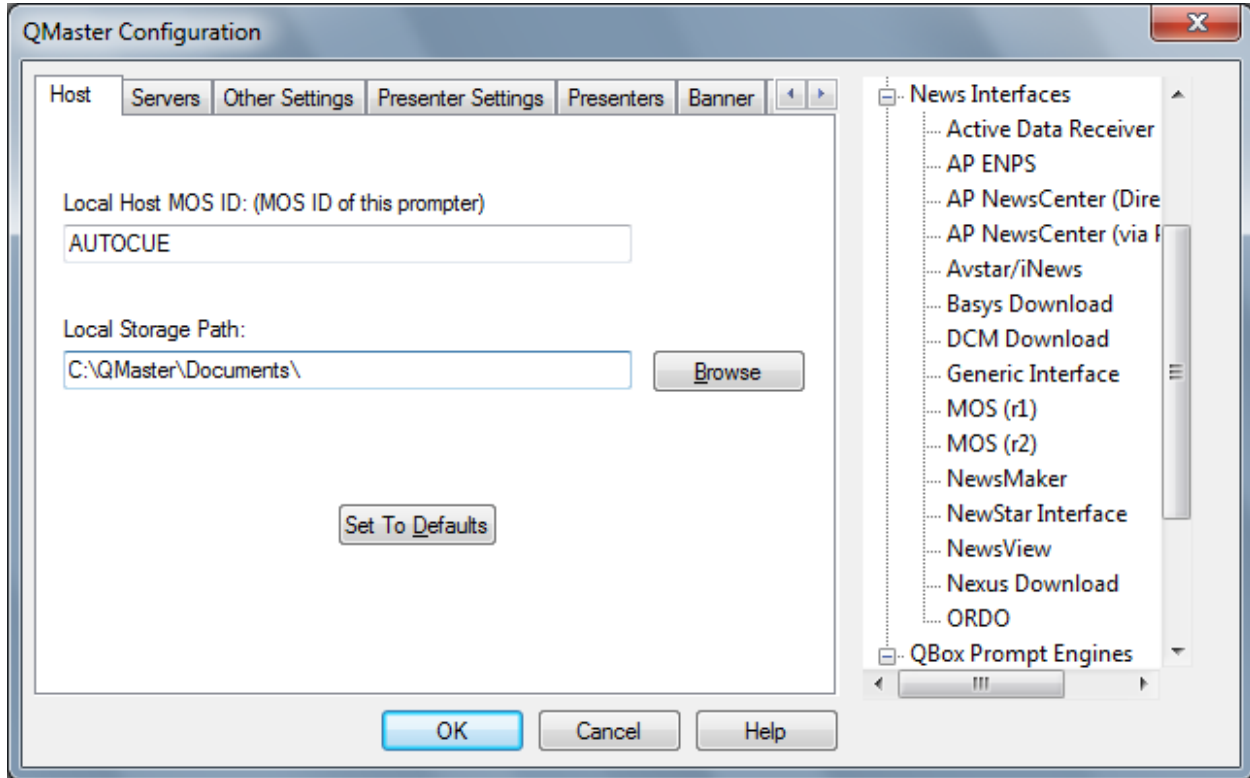
The newsroom system will have a MOS ID (also known as NCS ID) assigned to it. This MOS ID needs to be entered into QMaster MOS setup. Conversely, the prompter MOS ID will need to be entered into the newsroom system MOS setup as a target (or client) for the MOS communications. The actual MOS names you choose for the newsroom system and prompter system is not important. What is important is that you are consistent with the names across the two systems. For example: If the prompter MOS ID is set to be AUTOCUE and newsroom MOS ID is set to be ENPS, then AUTOCUE must be the name used in both the QMaster MOS setup and the newsroom system MOS setup as the prompter MOS ID. ENPS must be the name used in both the QMaster MOS setup and the newsroom system MOS setup as the newsroom system MOS ID. Note that MOS IDs are usually case sensitive.

4. As per the QMaster – QBox install guide instructions, you will have determined the version of QBox you have.

- For setting up MOS with version 1 QBox, proceed to **Step 5**.

- For setting up MOS with version 2 QBox, proceed to **Step 6**.

5. MOS Setup if using version 1 QBox:

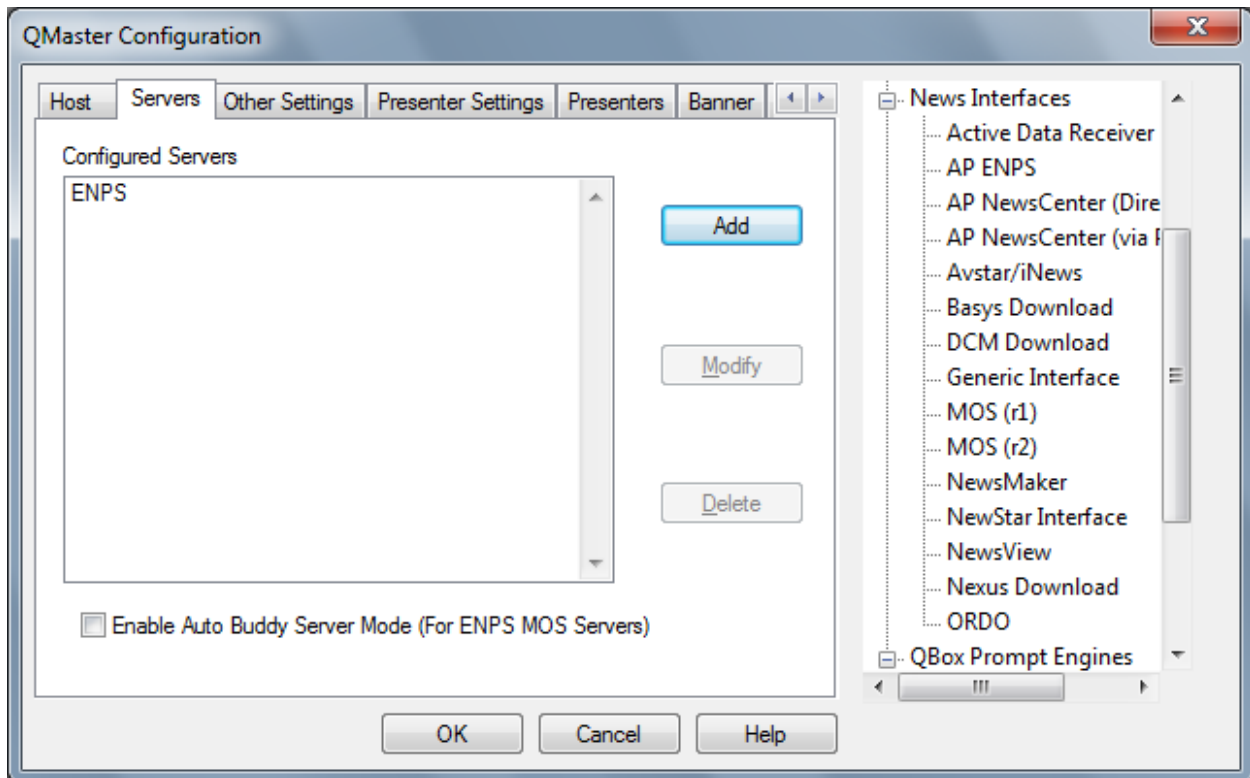


In QMaster, go to Tools->Options->News Interfaces->MOS (r1)

In the Host tab, in the Local Host MOS ID field, enter the MOS ID of the prompter.

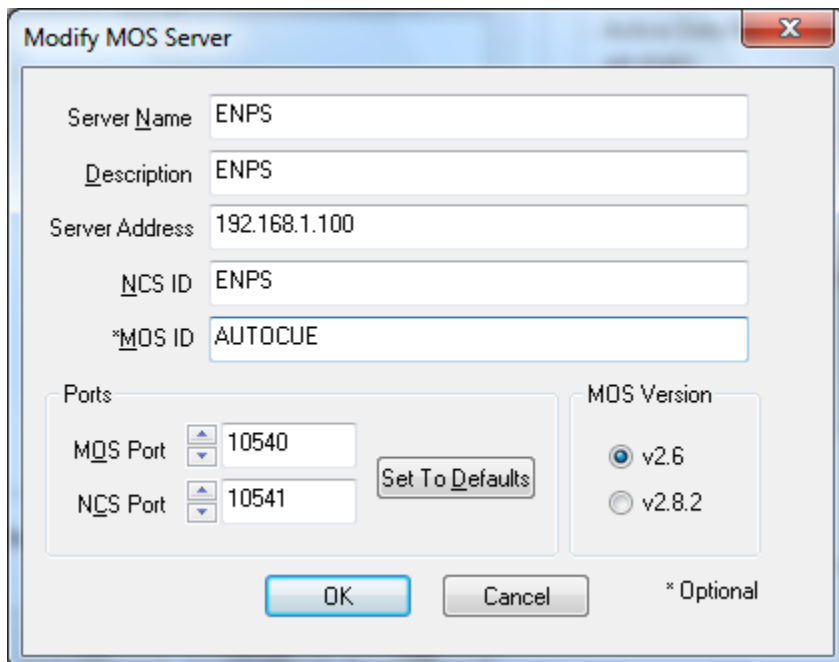
In the Local Storage Path, enter a path which will be used to store data received via MOS. Make sure the path is a folder that exists. If it doesn't exist you must create it manually.

The "Set To Defaults" button will set the MOS ID to be the computer's host name and set the Local Storage Path to be "C:\QMaster\Documents".



In the Servers tab, click Add to add a server entry for the newsroom system.

NOTE: If using ENPS with two redundant servers, enter each server as a separate server entry, then check the “Enable Auto Buddy Server Mode” option.



Server Name is just an arbitrary name you choose to give the server entry a name in QMaster.

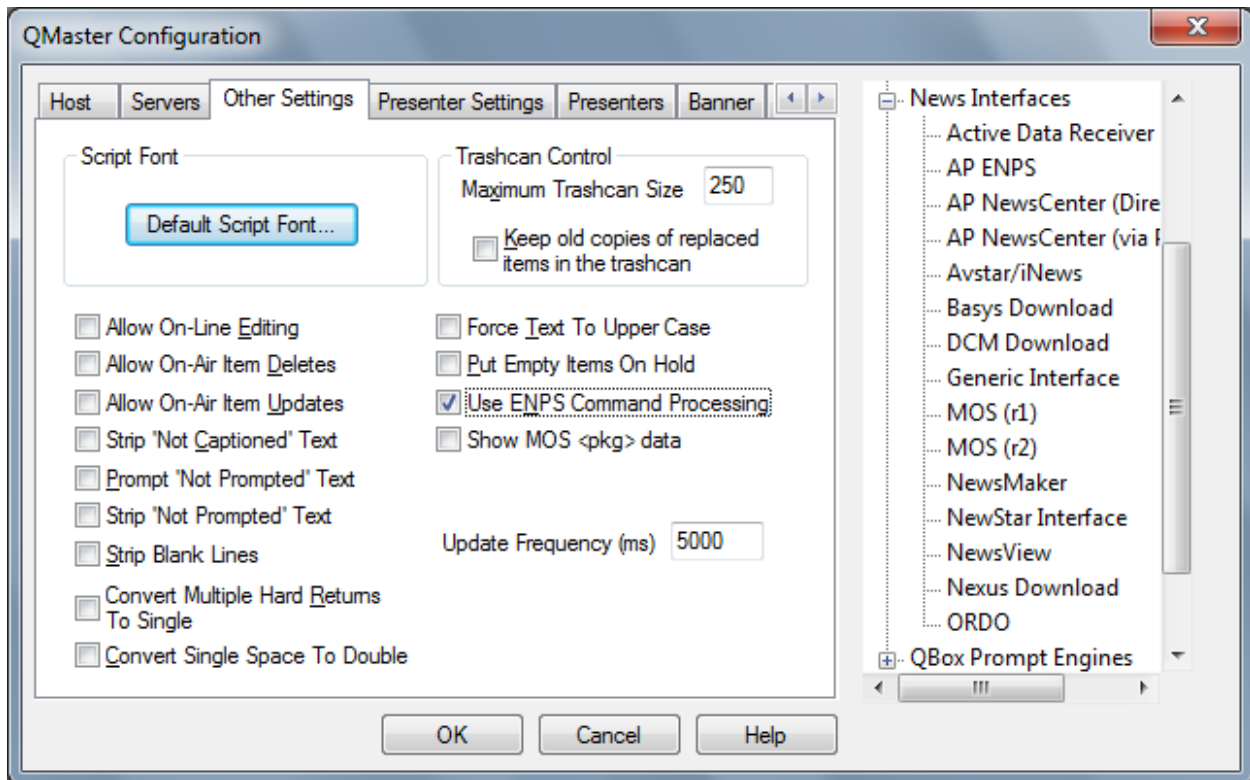
Description is just an arbitrary description of your choice.

Server address must be the hostname, fully qualified domain name, or IP address of the newsroom system (specifically, the server running the newsroom MOS services).

NCS ID is the MOS ID name of the newsroom system.

MOS ID is the same as the local host MOS ID from the Host tab.

Unless specifically instructed, leave the MOS Port, NCS Port and MOS version as the defaults.



In the Other Settings tab, there are options to change the behavior of the news interface.

Default Script Font: Click on this button and select the font you wish to be used for stories received via MOS.

Maximum Trashcan Size: Specify the maximum number of items that can be stored in the QMaster trashcan (the default is 250).

Keep old copies of replaced items in trashcan: By selecting this option, old copies of updated items will be kept in the trashcan.

Allow On-Line Editing: If enabled, the user can edit stories received via MOS in QMaster; if disabled, stories received via MOS can only be edited in panic mode.

Allow On-Air Item Deletes: If enabled, the story currently on prompter can be deleted via a MOS update. Note: this may cause a flash to appear on the prompter as the story is deleted.

Allow On-Air Updates: If enabled, the story currently on prompter can be updated via a MOS update. Note: this may cause a flash to appear on the prompter as the story is updated.

Strip 'Not Captioned' Text: If enabled, 'not captioned' text (text that is not meant to be sent to closed captioning) will be completely removed from the story received via MOS. Thus this text will not be prompted.

Prompt 'Not Prompted' Text: If enabled, 'not prompted' text (text that is not meant to be prompted) will instead be prompted.

Strip 'Not Prompted' Text: If enabled, 'not prompted' text (text that is not meant to be prompted) will instead be completely removed from the story received via MOS. Thus this text will not be prompted and not be captioned.

Strip Blank Lines: If enabled, blank lines in the story will be removed.

Convert Multiple Hard Returns To Single: If enabled, two or more Hard Returns in a row will be replaced with a single Hard Return.

Force Text to Upper Case: If enabled, all text received will be forced to upper case. two or more Hard Returns in a row will be replaced with a single Hard Return.

Put Empty Items On Hold: If enabled, any stories received containing no text will be treated as 'on hold' (floated). This option will help to reduce the amount of story titles displayed on the prompter.

Use ENPS Command Processing: If enabled, text received delimited with certain characters will be treated as described:

Round Brackets () - Not Captioned

Square Brackets [] - Strip/Remove

Angled Brackets <> - Not Prompted

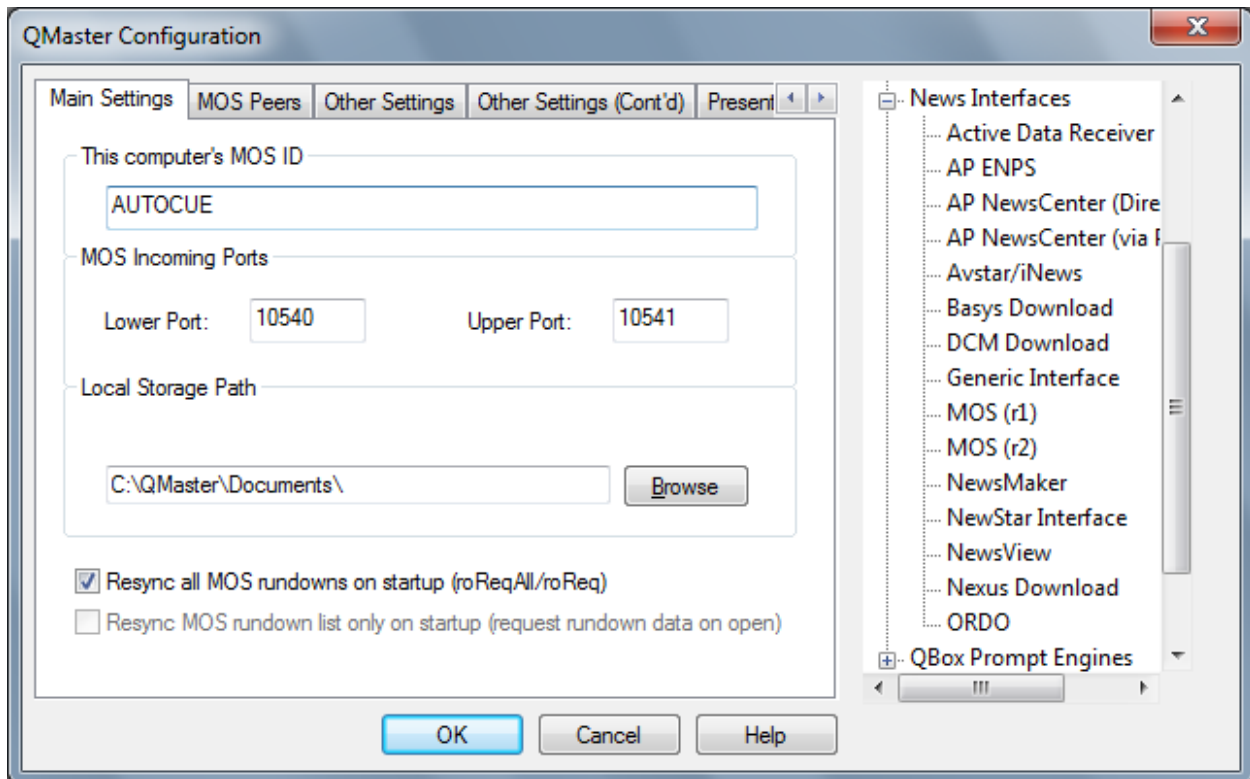
Curly Brackets {} - Not Captioned

Show MOS <pkg> data: If enabled MOS<pkg> data will be displayed.

Update Frequency (ms): Set how often QMaster should check for updates via MOS. Default is 5000 milliseconds (5 seconds).

Skip to **Step 7**.

6. MOS Setup if using version 2 QBox:



In QMaster, go to Tools->Options->News Interfaces->MOS (r2)

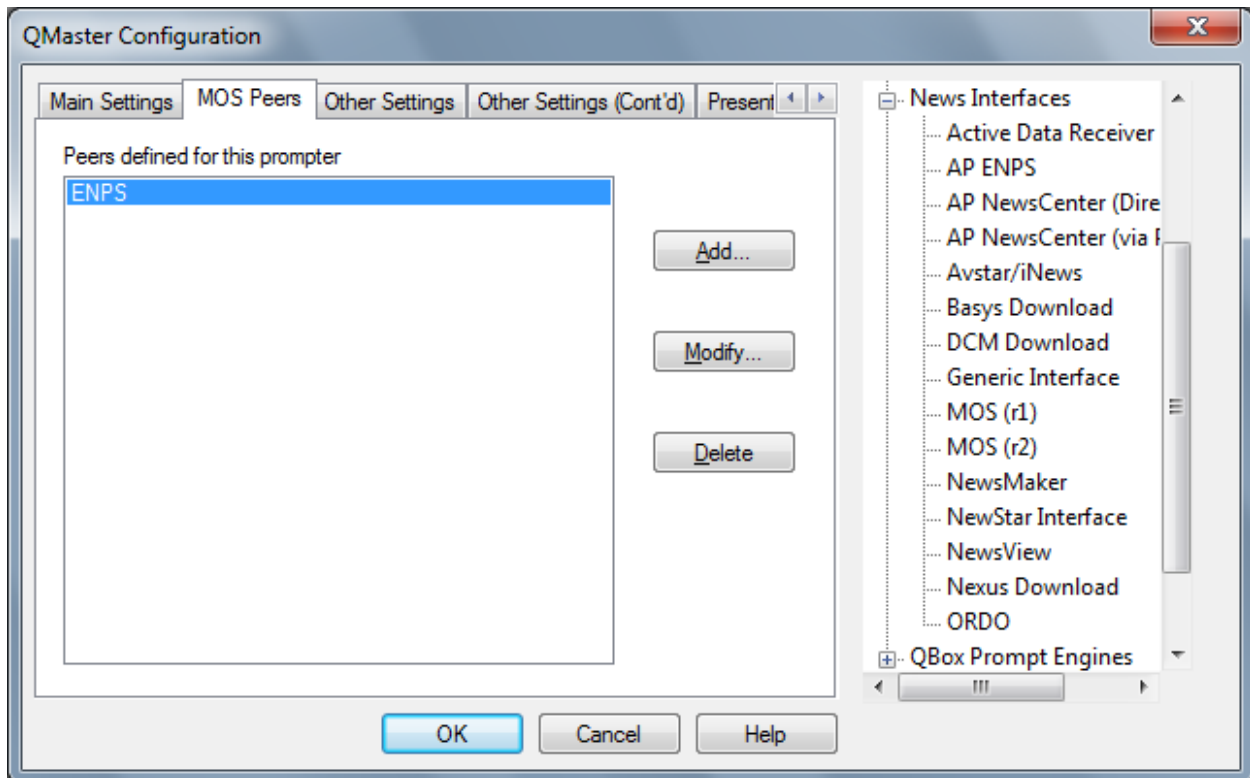
In the Main Settings tab, in the MOS ID field, enter the MOS ID of the prompter.

Unless specifically instructed, leave the MOS Lower Port, Upper Port as the defaults.

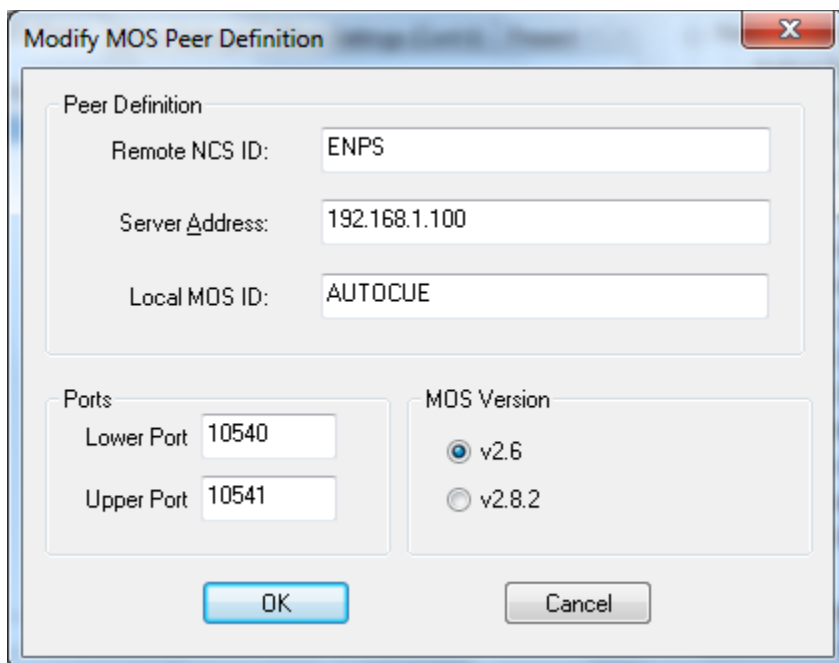
In the Local Storage Path, enter a path which will be used to store data received via MOS. Make sure the path is a folder that exists. If it doesn't exist you must create it manually.

Resync all MOS rundowns on startup (roReqAll/roReq): If enabled, when QMaster is restarted, QMaster will request to receive via MOS all "MOS active" rundowns from the newsroom system.

Resync MOS rundown list only on startup (request rundown data on open): If enabled, when QMaster is restarted, QMaster will request the list of all "MOS active" rundowns. The rundown will be loaded only after you choose one from the list.



In the MOS Peers tab, click Add to add a server entry for the newsroom system.

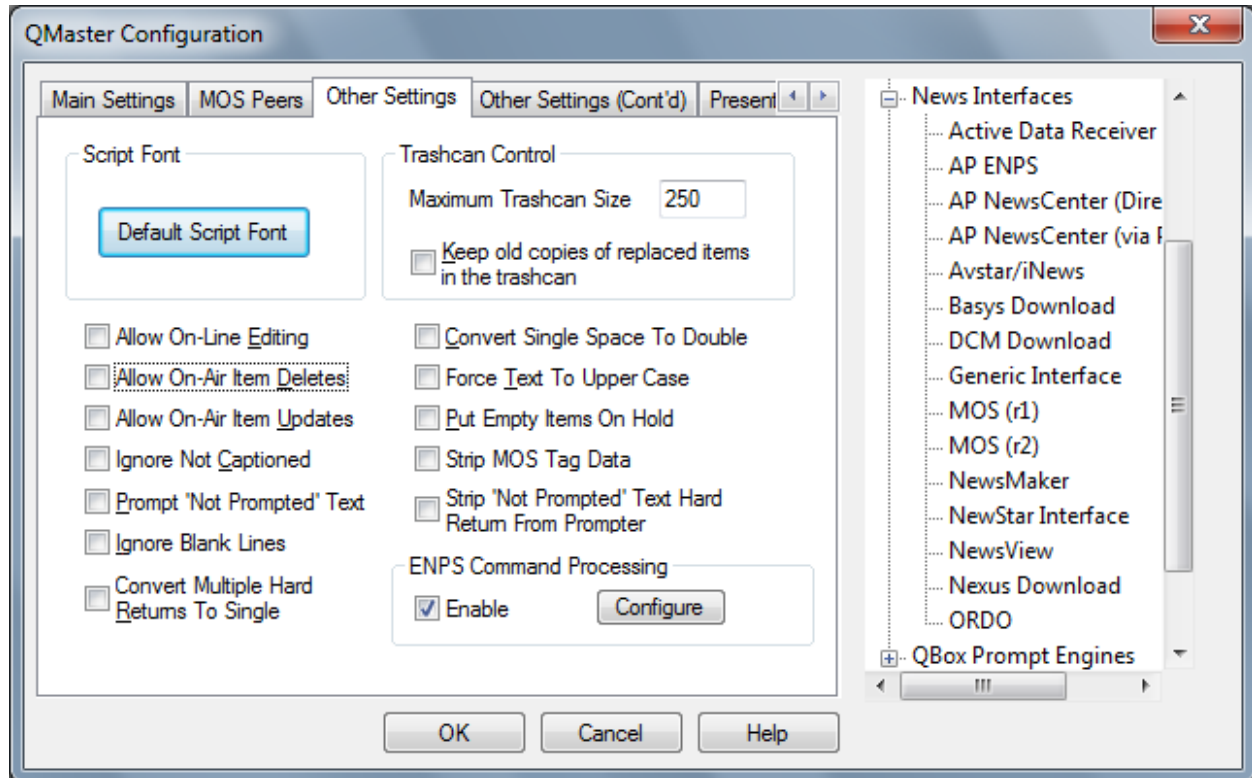


Remote NCS ID is the MOS ID of the newsroom system.

Server Address must be the hostname, fully qualified domain name, or IP address of the newsroom system (specifically, the server running the newsroom MOS services).

Local MOS ID is the same as the MOS ID from the Main Settings tab.

Unless specifically instructed, leave the Lower, Upper port, and MOS version as the defaults.



In the Other Settings tab, there are options to change the behavior of the news interface.

Default Script Font: Click on this button and select the font you wish to be used for stories received via MOS.

Maximum Trashcan Size: Specify the maximum number of items that can be stored in the QMaster trashcan (the default is 250).

Keep old copies of replaced items in trashcan: By selecting this option, old copies of updated items will be kept in the trashcan.

Allow On-Line Editing: If enabled, the user can edit stories received via MOS in QMaster; if disabled, stories received via MOS can only be edited in panic mode.

Allow On-Air Item Deletes: If enabled, the story currently on prompter can be deleted via a MOS update. Note: this may cause a flash to appear on the prompter as the story is deleted.

Allow On-Air Updates: If enabled, the story currently on prompter can be updated via a MOS update. Note: this may cause a flash to appear on the prompter as the story is updated.

Ignore 'Not Captioned' Text: If enabled, 'not captioned' text (text that is not meant to be sent to closed captioning) will be completely removed from the story received via MOS. Thus this text will not be prompted.

Prompt 'Not Prompted' Text: If enabled, 'not prompted' text (text that is not meant to be prompted) will instead be prompted.

Ignore Blank Lines: If enabled, blank lines in the story will be removed.

Convert Multiple Hard Returns To Single: If enabled, two or more Hard Returns in a row will be replaced with a single Hard Return.

Force Text to Upper Case: If enabled, all text received will be forced to upper case. two or more Hard Returns in a row will be replaced with a single Hard Return.

Put Empty Items On Hold: If enabled, any stories received containing no text will be treated as 'on hold' (floated). This option will help to reduce the amount of story titles displayed on the prompter.

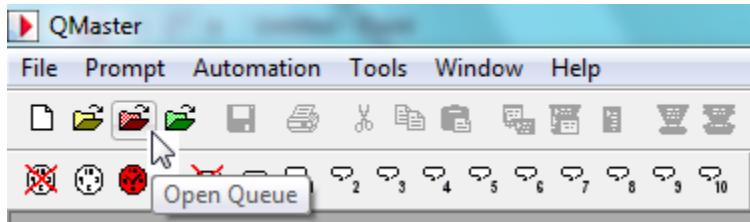
Strip MOS Tag Data: If enabled, MOS Tag data will be removed.

Strip 'Not Prompted' Text Hard Return From Prompter: If enabled, 'Not Prompted' text Hard Return will be removed from the prompter.

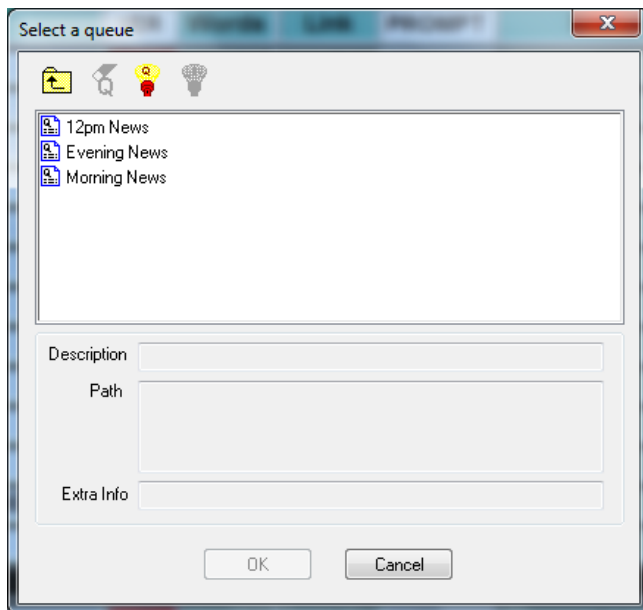
Use ENPS Command Processing: If enabled, text received delimited with certain characters will be treated in a special way. Pressing the Configure button allows you to customize the special handling.

7. Once you have completed the MOS configuration, Click OK to return to the main program screen. Exit the QMaster program and restart after making MOS configuration changes.

During normal operations, you will need to make the rundown “MOS Active” in the newsroom system. This will cause the newsroom system to send the rundown information (scripts) to the prompter via MOS.



In QMaster, click the red folder button (“Open Queue”) in the toolbar to access the rundowns received via MOS.



For Support:

Via Email: SoftwareSupport@Autocue.com

Via Telephone:

+1 212 929 7755 in the Americas

+44 208 665 2992 in the rest of the world.

For Sales:

Via Email: Sales@Autocue.com

Via Telephone:

+1 212 929 7755 in the Americas

+44 208 665 2992 in the rest of the world.